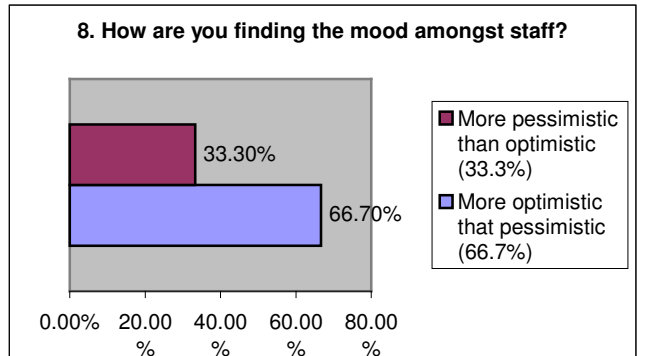
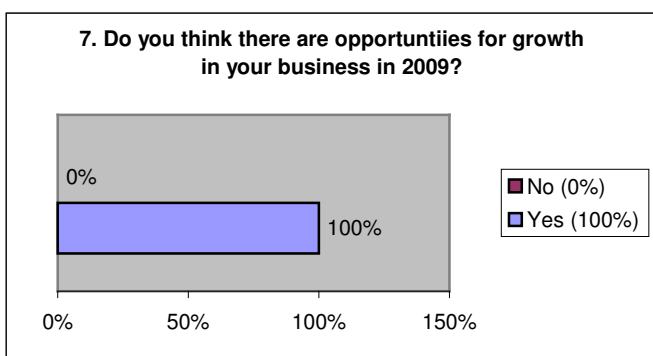
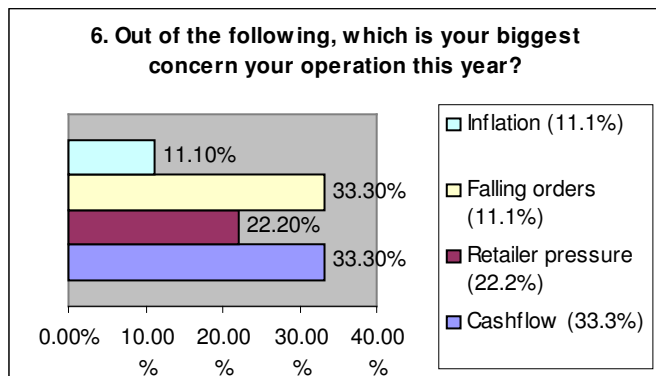
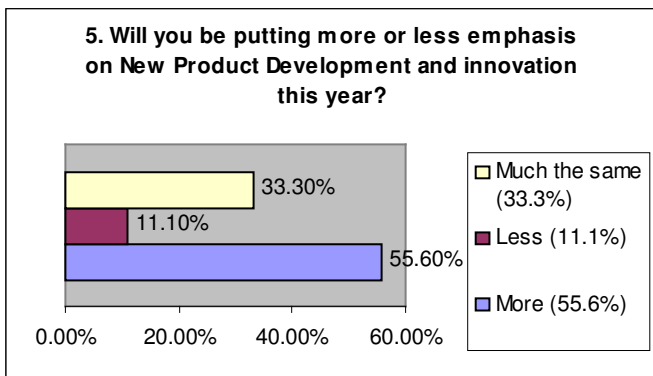
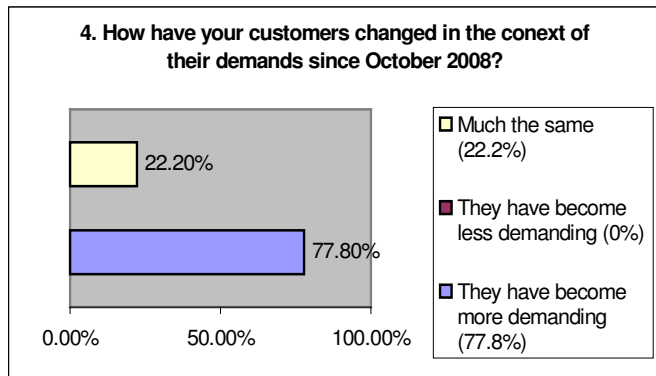
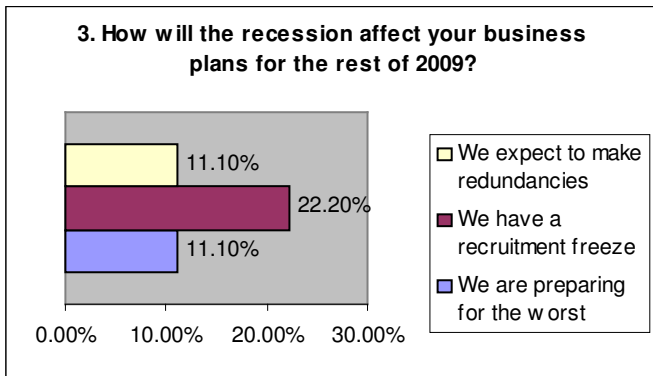
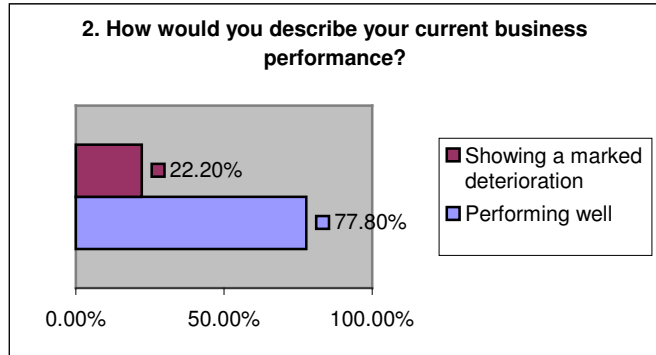
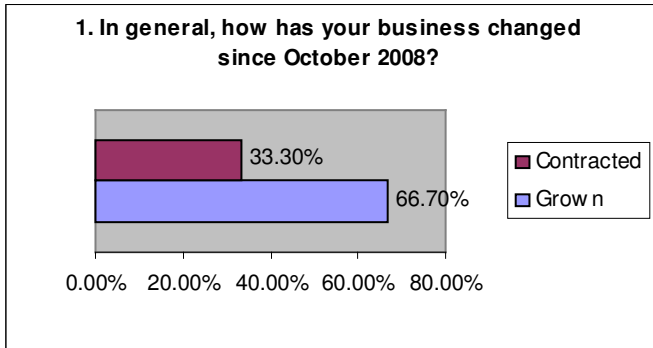
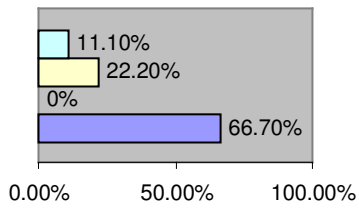




## How has the recession affected your business? Hutchinson survey results

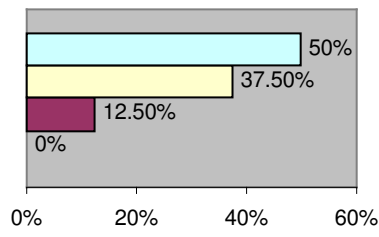


**9. Finally, which of the following think is most true about the coverage of the recession?**



- It is underestimating the situation (11.1%)
- It is fair (22.2%)
- It is mostly exaggerated (0%)

**10. What is the approximate annual turnover for your site?**



- Over £50 million
- £10.50 million (37.5%)
- £2-10 million (12.5%)
- £0-2 million (0%)